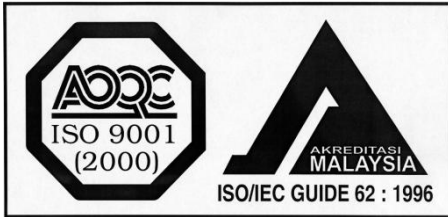


THL ELECTRONICS SDN BHD



Registration no.: 1140



Company Profile

LOT 1907, JALAN PARIT IBRAHIM,
SUNGAI PINGGAN,
82200 BENUT, PONTIAN,
JOHOR, MALAYSIA.

www.thl-electronics.com

INTRODUCTION

THL Electronics was established in Dec'1999 with the aim of providing PCB assembly services to the market needs in the new millennium. The company was formed by three technopreneurs with the similar vision to be the leading PCB assembly manufacturer in our market segment.

Mr. Hoo Chaur Jiang – Mr. Hoo has worked for Panasonic Communication Malaysia since 1984 serving in a management position. Mr. Hoo wide contact in this industry will be valuable to the company sales and marketing segment.

Mr. Lim Cheng Wee – Mr. Lim entered the Electronics market in 1991 as an Engineer in the thru-hole and SMT assembly, and was eventually raised to perform senior managerial duties. Mr. Lim's years of hands-on experiences will allow him to manage the company operation.

In this new economy, the needs for faster product turn-around time, lower production cost and higher quality products have become ever important.

In this regards, **THL Electronics** is aiming to position itself to meet the needs in the new millennium by maintaining a **competent workforce, effective quality management system** and investing in appropriate **high-technology machinery and equipment**.

With our state of the art machinery and equipment, we would be able to provide our customers with competitive products and services in areas of **Price, Quality, Product Turn-Around Time** and **On-Time Delivery**.

In order to maintain a competent workforce and an ideal workplace, we believe in the importance of being a **Learning Organization**. Equipping the workforce with the skill and knowledge to be competent in their jobs.

COMPANY QUALITY POLICY

THL Electronics Sdn Bhd seeks to be a leading provider of contract manufacturing services for Auto Insertion / Surface Mount Technology Printed Circuit Board Assemblies.

The management and staff commit to establish, implement, maintain and continually improve the ISO9001 QMS so as to achieve the following:

1. Providing competitive products and services in the area of **Quality, Cost, Delivery and Product Turn Around Time.**
2. Providing **Total Quality Services** to our customers.
3. Maintaining a **Competent Workforce and Ideal Workplace.**



QUALITY CONTROL AND ASSURANCE



We strongly believe that quality is the ultimate competitive edge in achieving customer satisfaction. Our high quality standard and reliability of products

and services are assured through a multitude of QA activities which include Intensive Employee Training, Quality Plan Documentation (ISO Standard), Defect Preventive Measures, Regular Calibration of Machinery/ Equipment, OQC Inspection, Comprehensive Process Control Parameters, Timely Problem Solving and Customer Complaint Handling Procedures. Our ISO 9001 certification is the best proof of our profound quality assurance effect and eminent quality standard.



COMPETITIVE ADVANTAGES

- Surface Mount Technology
- Thru-Hole Technology
- Technical Know-How in AI/SMT
- ISO 9001 : 2000 Certified
- Strategic location
- Door-to-Door Service
- Short Products Lead Time
- Low Production Overheads
- Consignment & Turn-Key Services



Surface Mount Technology



Axial Insertion machine



Manual assembly line

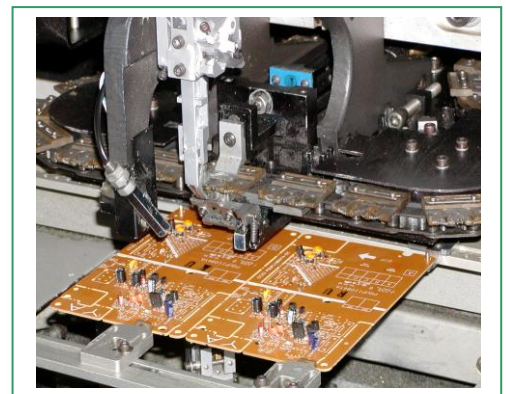
PRODUCTS AND SERVICES

With the partnership with MCTRONIC INDUSTRIES SDN BHD, we are able to provides our customer's the following services:-

- ✓ SMT PCB Assembly
(Adhesive and Solder Paste)
- ✓ Thru-Hole components PCB Assembly (Axial 26 & 52mm taping and Radial 2.5 & 5.0mm pitch)
- ✓ DIP PCB Assembly
- ✓ Manual PCB Assembly
- ✓ Plastic Parts Assembly
- ✓ PCB Electrical Testing



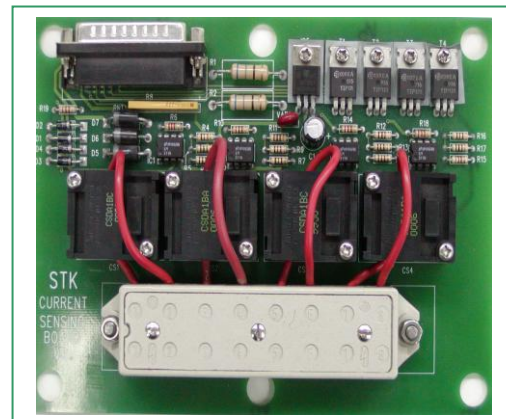
Surface Mount board



Radial insertion board

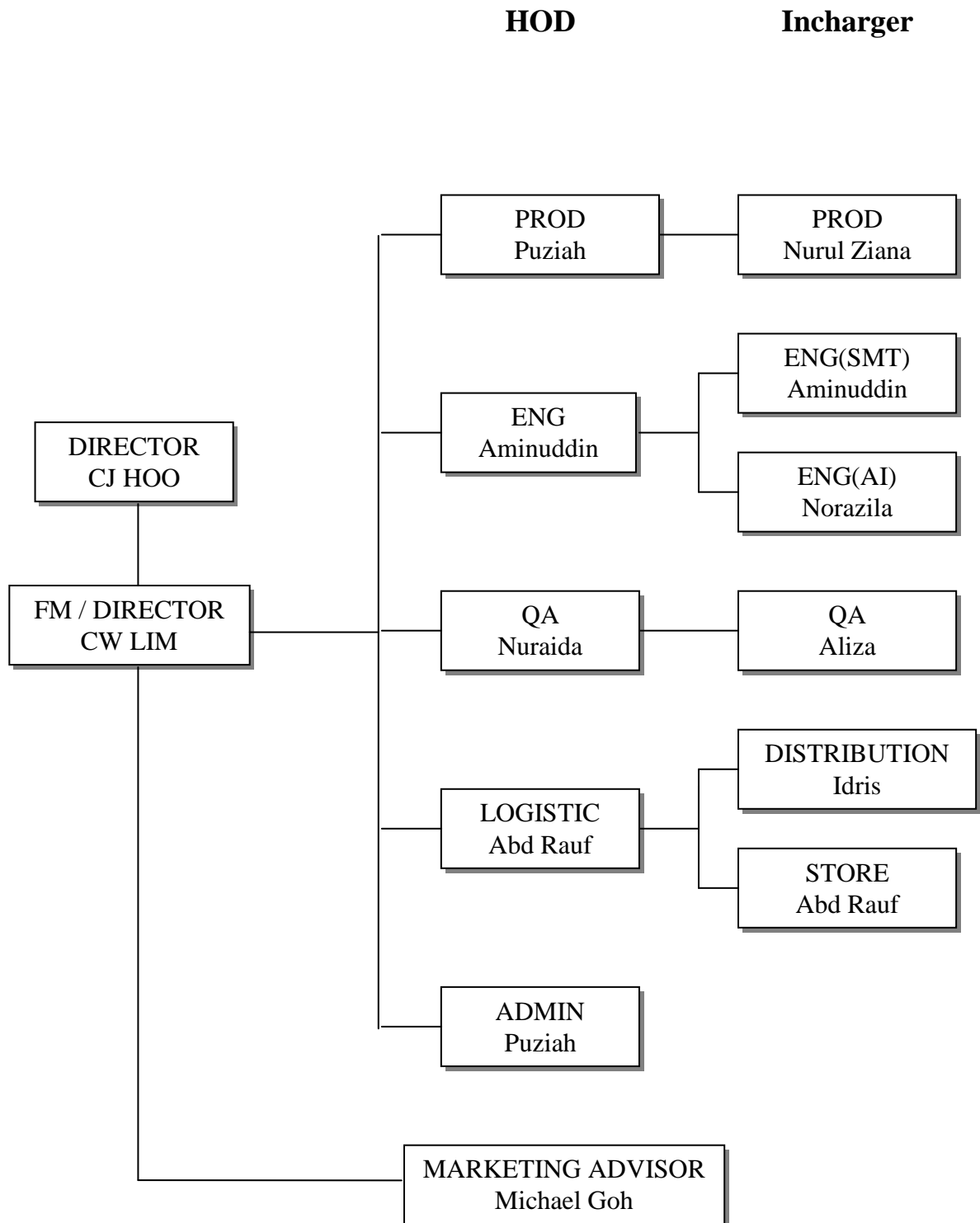


Completed product



Auto and Manual assembled board

ORGANIZATION STRUCTURE



LIST OF MACHINERY AND EQUIPMENT

Item	Description	Model	Units
1.	Yamaha surface mounter	YV100II	2
2.	Yamaha surface mounter	YV100XG	1
3.	MPM Ultraprint 2000 Automatic Screen Printer	UP2020	1
4.	KME Glue Dispenser	BD10M	2
5.	Nousstar Reflow Oven	King2-8820	1
6.	Heller Reflow Oven	1800SX	1
7.	Panasert Axial Inserting Machine	AVB	1
8.	Panasert Axial Insertion Machine	AE	1
9.	Panasert Radial Inserting Machine	RH	2
10.	Universal Wire Inserting Machine	6295A	2

COMPANY DETAILS

1.	Name	THL ELECTRONICS SDN BHD
2.	Address	Lot 1907, Jalan Parit Ibrahim, Sungai Pinggan 82200 Benut, Pontian, Johor, Malaysia.
3.	Company No.	502549-D
4.	Email Address	sales@thl-electronics.com
5.	Date of Establishment	30 th Dec 1999
6.	Telephone No.	607-6901466
7.	Fax No.	607-6901467
8.	Authorized Capital	RM1,500,000
9.	Paid-up Capital	RM250,000
10.	Capital Investment	RM2,500,000
11.	Number of Employees	35
12.	Floor area	10,000 Sq. Ft.
13.	Banker	Maybank Berhad
14.	Director's	Mr. Hoo chaur Jiang Mr. Lim Cheng Wee
15.	Main customer's	EMHART GLASS SDN BHD RECTIFIER TECHNOLOGIES (M) SDN BHD YS PRODUCTS SDN BHD MCTRONIC INDUSTRIES SDN BHD COSMOS OPTICAL & METAL ENGINEERING PTE LTD C&W ELECTRONICS PTE LTD HWEE JAN (S) PTE LTD

Dated: 01/01/2015